



# HID207 - Compact Ice & Water Dispenser

Nugget Ice Machine / Dispenser



Touch-free infrared sensor dispensing option, provides more sanitary operation



Antimicrobial push-button dispensing option, provides quick and efficient operation



## 24-HR Volume Production

Air Cooled

70°F/21°C 50°F/10°C	Air Water	90°F/32°C 70°F/21°C
196 / 89 lb/kg		160 / 72 lb/kg



## Specifications

Model Number	Condenser Unit	Dispensing Method	Storage Capacity lb/kg	Basic Electrical Volts/Hz/Phase	Max. Fuse Size or HACR Circuit Breaker (amps)	Min. Circuit Amps	Energy Consumption KWh/100 lb 90°F(32°C)/70°F(21°C)	Water Usage Gallons/100 lb (liters/45.4 kg)	
								Potable 90°F(32°C)/70°F(21°C)	Condenser 90°F(32°C)/70°F(21°C)
HID207AX-1	Air	Touch-Free Sensor	7/3.17	115/60/1	15	Cord	4.90	12/45.4	-
HID207ABX-1	Air	Button Activated	7/3.17	115/60/1	15	Cord	4.90	12/45.4	-



## Nugget Ice

The Original, Chewable Nugget Ice® preferred by customers



7/16" x 5/16" x 3/8"  
(1.11 x 0.8 x 0.95 cm)



## Certification



## Warranty

- 3 Years parts and labor.
- 5 Years parts on the compressor and condenser.
- Warranty valid in North, South & Central America for commercial installations.
- Contact factory for warranty in other regions.
- Residential Applications: 1 year parts and labor

## Features and Benefits

### Health & Wellness

#### UV-LED Sanitation

Internal UV module actively treats intake to ensure clean, refreshing ice and water.

#### Sanitary Design

AgION® antimicrobial technology is molded into key components to help inhibit the growth of microbes, bacteria, mold, and algae. Sealed refrigeration system minimizes outside airborne contamination.

#### Easily Removable Components

Fully removable air filter, chutes, sink, grill, and bin allow for easy cleaning and maintenance.

### Enhanced Reliability

#### Sealed, Maintenance-Free Bearings

Reduces preventative maintenance and extends unit longevity.

#### Maximum Uptime

Integrated drain cover and consolidated drain ensures reliable operation.

### Ease of Use

#### AutoAlert™ Indicator Panel

Intuitively displays relevant machine status that is visible across the room.

#### SmoothStream™ Water Dispensing Technology

Combined with illuminated dispensing, to reduce splashing while keeping the machine and surrounding areas clean.

#### Compact Design

Features unique contoured sides for enhanced breathability and tight installs.

#### ADA Compliant Dispensing Area

Touch-free and push-button models meet ADA reach range requirements.

#### Flexible Configuration

Ice only configuration available with included snap-on panels.

HID207 - Compact  
Ice Machine / Dispenser

# Scotsman®

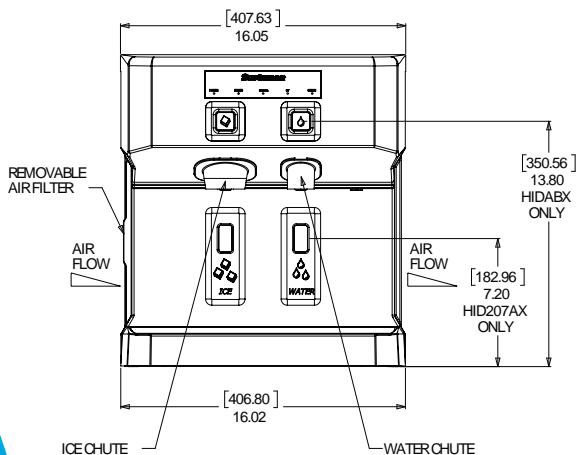
101 Corporate Woods Parkway, Vernon Hills, IL 60061

1-800-SCOTSMAN | Fax: 847-913-9844 | www.scotsman-ice.com | customer.relations@scotsman-ice.com

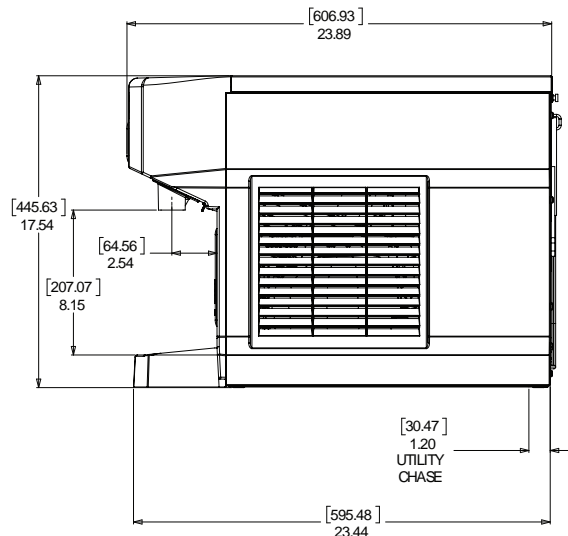
# HID207 - Compact Ice & Water Dispenser

## Nugget Ice Machine / Dispenser

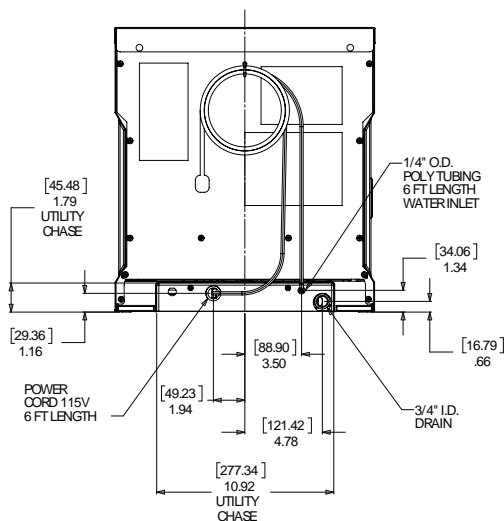
FRONT VIEW



RIGHT SIDE VIEW



BACK VIEW



Installation Note: Allow 6" space at left, back and right side for ventilation and utility connections.  
All models include 6' power cord with NEMA 5-15P plug.

## HID207 - Compact Ice Machine / Dispenser



### All Models

#### Dimensions (W x D x H):

Unit: 16.05" x 23.44" x 17.54"  
40.7 x 59.5 x 44.5 cm

Shipping Carton: 25.75" x 27.15" x 23.95"  
65.4 x 68.9 x 60.8 cm

Shipping Weight: 80 lb/ 36.29 kg

BTUs per hour: 3,200

Refrigerant: R-290



### Accessories

#### Model Number

#### Description

KLP24A 4" Adjustable legs, box of 4, plastic with metallic foot.  
HSTCD16-A Machine stand for HID207, with reversible door and shelf.

Scotsman recommends all ice machines have water filtration. See Scotsman water filter specification sheet for details.



### Operating Requirements

	Minimum	Maximum
Air Temperatures	50°F (10°C)	100°F (38°C)
Water Temperatures	40°F (4.4°C)	100°F (38°C)
Potable Water Pressures	20 PSIG (1.4 bar)	80 PSIG (5.5 bar)
Electrical Voltage	-5%	+10%

Specifications and design are subject to change without notice.